

Experience
**GROUND-BREAKING
POWER**

and Aftermarket Support
with John Deere & Emmetts



Emmetts is pleased to offer a range of John Deere Compact Construction Equipment. With over 60 years experience and a fundamental goal to 'keep farmers farming', Emmetts is committed to the lifetime of our customers machines, through:

- Aftermarket support that all machinery users need to keep their business running, including after hours on call technicians;
- A large team of fully trained technicians across the Emmetts branches who are focused on reducing your costly down time;
- Stocking a large range of parts permanently kept on hand to keep machinery running.

John Deere have always created products that push the boundaries of innovative agricultural, commercial and construction machinery. The G series skid steers and compact track loaders feature a machine design and components that have been proven in the market. The new line up of skid steers, compact track loaders and mini excavators are perfectly suited to the needs of farmers, construction businesses, landscapers, pool installers, and plumbers. As part of the compact construction equipment range, these products will provide the practical technology needed by business owners to achieve on-site gains through their machinery.

Emmetts are happy to provide demos and to show you the range of machines in stock. For more information contact your local Emmetts branch.

Regards,

Peter Emmett
Managing Director



Small Frame Machinery	3
Skid Steers (Mid/Large Frame)	12
320G, 324G, 330G, 332G	
Compact Track Loaders	20
325G, 331G, 333G	
Mini Excavators	29
E18ZS, E36ZS	
Accessories	36

SKID STEERS



318G



320G



324G



330G



332G

COMPACT TRACK LOADERS



317G



325G



331G



333G

MINI EXCAVATORS



E18ZS



E36ZS

G-SERIES SMALL FRAME MACHINES

Whether you're acquiring your first machine or adding to a fleet, there's a John Deere G-Series Skid Steer or CTL that's all-in for you.

318G



More power and options

If you're seeking a more powerful, better-equipped machine, step up to the vertical-lift 318G Skid Steers. These larger-performance models also offer more options including joystick controls, air conditioning, and ride control, just to list a few.

When smaller is smarter

Wheel options enable G-Series machines to slim down and fit through narrow openings.

Pick up the pace

Two-speed option in the 318G provides faster transport speeds to help boost productivity.

Space commander

With widths at less than 72 inches with optional 15.8-inch track and just over 65 inches with standard 12.6-inch track, little gets in the way of the 317G CTL. Its small stature makes it easy to trailer, too.

Beast mode

Check the 317G CTL specs. Exceptional pushing power and breakout force deliver the tractive effort and leverage to dig in where other machines just spin.

Hydraulic boost

Make the most of an even broader range of attachments with higher auxiliary flow rates on the 318G and 317G CTL than on previous models.

Lightweight transport

With weights from only 5,905 to 8,423 pounds and convenient front and read tie-downs, these compacts are easy to trailer behind a standard pickup truck.

Generous FT4 power

Turbocharged 2.1-L EPA Final Tier 4 (FT4)/EU Stage IV diesels meet rigid emission standards, run smooth, and pack plenty of power and torque.

Dig, pry, push

Ample axle torque and optimised boom and bucket breakout forces help carve out clay, push through piles, and keep the bucket heaped.

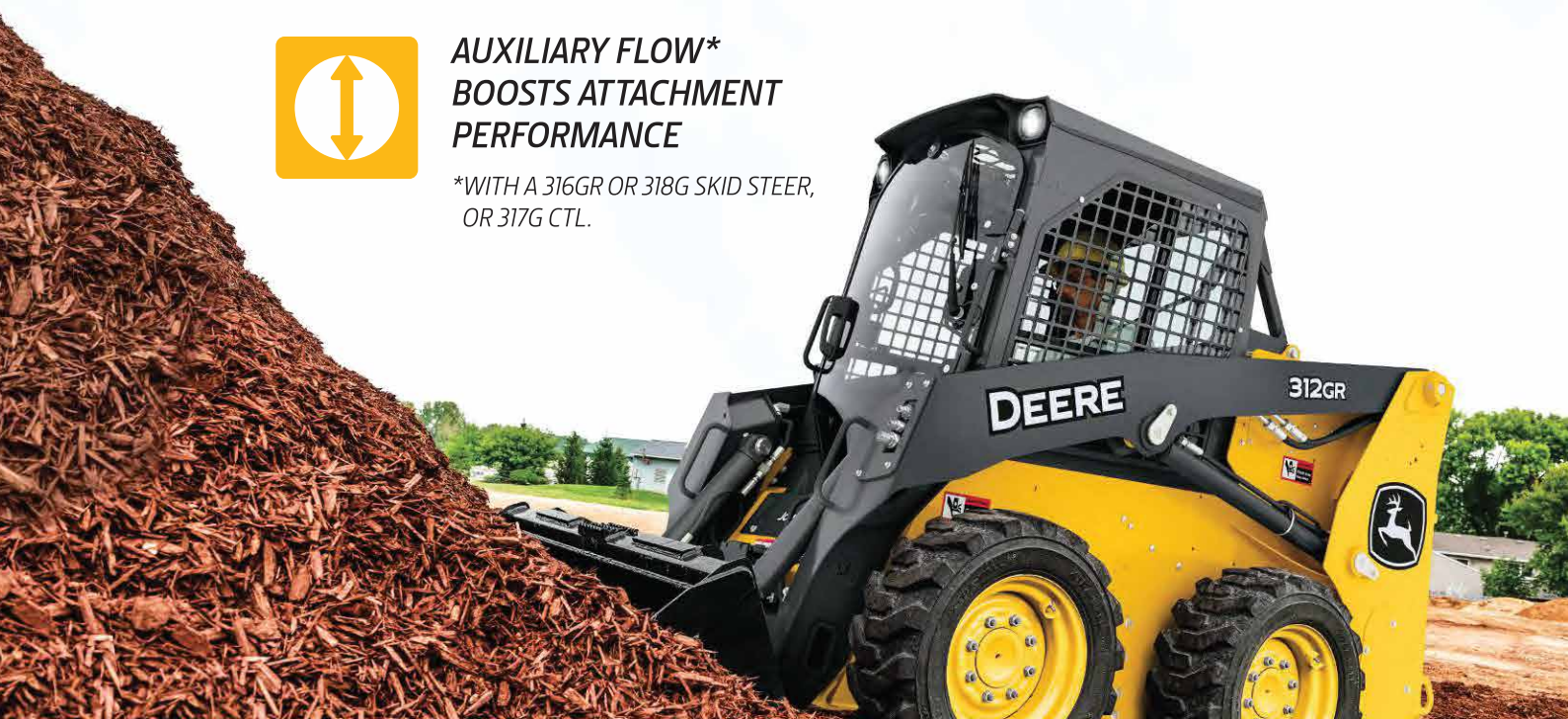
Tread lightly

Equipped with optional 15.8-inch-wide track, the 317G CTL's ground pressure is just 4.5 psi, enabling work in soft underfoot conditions and side-slope stability. With standard 12.6-inch-wide track, ground pressure is only 5.5 psi.



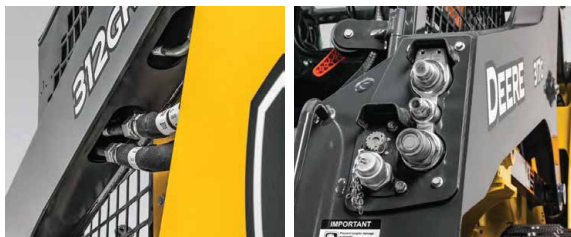
AUXILIARY FLOW* BOOSTS ATTACHMENT PERFORMANCE

*WITH A 316GR OR 318G SKID STEER,
OR 317G CTL.



BIG-TIME UPTIME

MORE EFFICIENT IN EVERY WAY.



Heavy-duty drivetrains

Oil-bathed final-drive chains withstand daily punishment and never need adjustment. Beefed-up drive sprockets also deliver long-term durability.

Easy refills

Refueling and other fluid additions are convenient and quick. Generous tank capacity and fuel-efficient diesels enable daylong operation, letting you accomplish more between fill-ups.

Big biceps

Large cross-section boom arms and heavy-duty upper links deliver the stamina to endure tough tasks, for long-term durability.

Hydraulics in boom

Auxiliary hydraulic lines and wiring are routed through the boom, where they're protected from damage.

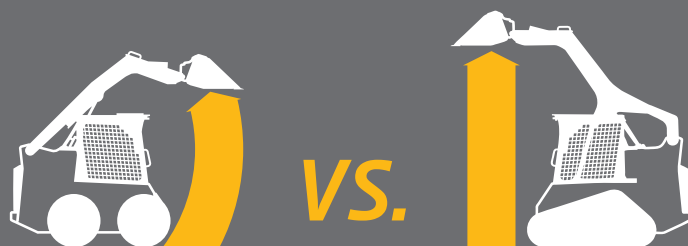
Chill out

Large coolers increase heat rejection for uninterrupted performance in severe, high-load conditions. Engine-mounted, belt-driven cooling fan delivers efficient, reliable performance.



BOOM LIFT RADIAL OR VERTICAL

These reimagined loaders rise high, pick up heavy loads, and deliver remarkable boom- and bucket-breakout forces. Plus, a low center of gravity and sure-footed balance provide exceptional agility and stability on slopes. Choose between vertical or radial lift to match your application.



WHAT'S THE DIFFERENCE?

RADIAL LIFT

More reach at mid-range lift heights; good for digging, grading, and backfilling.

VERTICAL LIFT

More lift height and reach at the top of the lift path, for more stability.

Power lifter

Vertical-lift boom rises to 10 feet 1 inch. Combined with a rated operating capacity of 2,125 pounds, the 317G CTL precisely places pallets and carries big loads.

Boom-diggity

Radial-lift booms on the 312GR and 316GR provide powerful digging performance and generous reach at a competitive price. For even more lifting ability, opt for the 318G or 317G CTL with vertical-lift booms that deliver outstanding lifting and truck-loading ability.

Carry more, spill less

Both radial- and vertical-lift designs keep the load close to the machine, for reliable stability. Low center of gravity, 30-degree bucket rollback, optional hydraulic self-leveling, and optional ride control (318G and 317G CTL only) also help keep buckets full and forks loaded. Add more capacity with up to two sets of counterweights.



INCREASE UTILIZATION

MULTITASKING MADE EASIER.

With the universal Quik-Tatch,[™] you can go from bucket, to forks, to whatever, in just seconds. Each compact model delivers plenty of standard hydraulic power to operate augers, roller levels, trenchers, or power rakes, to list just a few.

Bucket choices abound

Choose from multipurpose, dirt, rock, and rollout buckets in varying widths and capacities. Grading-heel bucket excels at back dragging.

Roadwork made easy

Perfect for concrete or asphalt flatwork, our angle brooms, vibratory rollers, cold planers, hydraulic hammers, and wide variety of buckets let you hit the road running.

Grab and go

Scrap grapples feature two dual-action hydraulic-powered grapples that grab and grip. Rock grapples are ideal for tasks such as land clearing, jobsite cleanup, and brush removal.

Landscape add-ons

Landscape and nursery options include planetary augers, pallet forks, power rakes, dozer blades, and roller levels, to list just a few.

Busybody

With go-everywhere rubber track undercarriage, universal Quik-Tatch, and auxiliary hydraulics, the 317G CTL is fully equipped to tackle a seemingly endless variety of tasks.

Farm hands

For handling hay, cleaning pens, rebedding stalls, or numerous other agricultural chores, add silage defacers, material/manure scrapers, pallet forks, bale spears, and buckets to get it done.



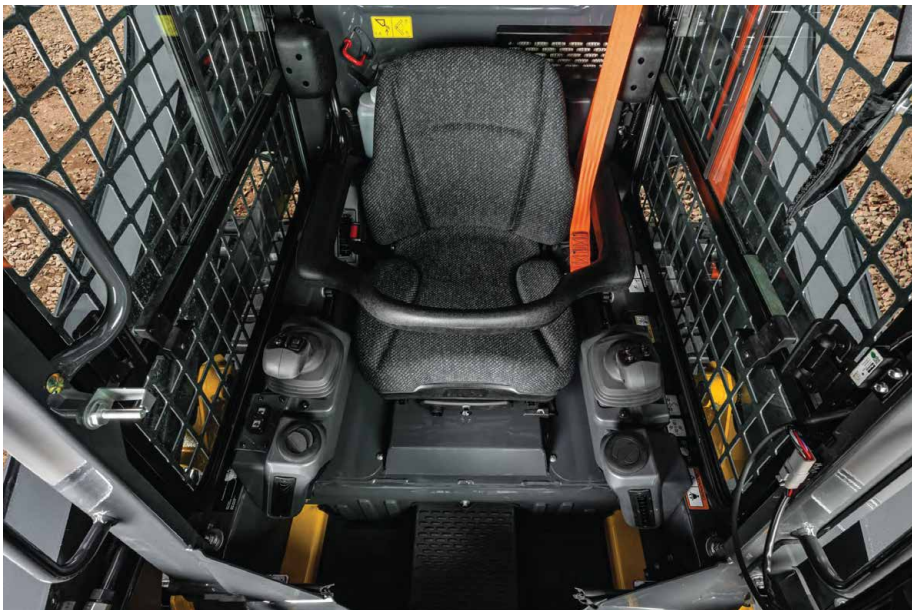
TAKE A LOAD OFF

ENHANCED ABILITY — AND COMFORT, TOO.

With our G-Series, compact doesn't mean cramped. Larger entryways with doors that swing out make it easier to get in, get comfortable, and get on with it. Inside, there's more foot- and legroom. Sealing and cab pressurization have been improved over previous models to help keep the dust out and the noise down, so you can focus on work — and even enjoy the hands-free Bluetooth® radio for streaming your favorite media. Operators will also appreciate what they see from the comfortable sculpted seat. Clear sightlines to the cutting edge and bucket corners, above and below the lift arms, and the jobsite ahead and behind instill confidence when working in close quarters.



REARVIEW CAMERA OPTION ENHANCES VISIBILITY



Heads-up operation

Overhead panel conveniently places machine info on the left, control switches to the right. Easy-to-read LCD monitor provides a wealth of info and control—including vital operating conditions and advanced diagnostics.

Push-button convenience

Optional sealed-switch module provides access to keyless start and anti-theft settings, plus fingertip activation of numerous machine functions including optional ride control (318G and 317G CTL only) and hydraulic self-leveling.

Safety first

Standard to all John Deere machines, personal-protection features abound. An in-cab-activated boom lock adds a triple-interlock system that detects the presence of operator help keep harm's way at bay.

Your controls, your way

Low-effort foot pedals are standard on all skid steers. Electrohydraulic (EH) joysticks are standard on the 317G CTL, optional on 318G skid steers.

Four-season comfort

For year-round comfort, air conditioning is available in the 318G and 317G CTL. On EH models, ducts and vents are optimally positioned to maximise air flow.

Enhanced visibility

Excellent all-around visibility has been further enhanced with an LED side-lighting option (318G and 317G CTL only). Choose the optional rearview camera, available on all models, to see the jobsite behind the machine.

Riding high

Adjustable high-back sculpted seat provides daylong comfort and support. For even more comfort, a heated air-ride seat is available on the 318G and 317G CTL.



Simple serviceability

Swing-out rear door enables easy, ground-level access to daily service checkpoints and cooling system components. If major component access is necessary, the ROPS can be tilted in less than five minutes.

Minimal maintenance

Redesigned Quik-Tatch system is optimized for effortless reach to grease zerks, minimizing maintenance time and expense.

JDLink™ machine monitoring

Optional JDLink provides machine location data and health alerts to help you decrease costly downtime.

Simplified checks

Color-coded handles and caps on conveniently positioned dipsticks and filler necks simplify checks and additions. See-through reservoirs and sight gauges let you check fuel, hydraulic oil, and windshield washer fluid levels at a glance.

Easy cleanup

If you're a neat freak or run a rental yard, you'll appreciate the convenient floor access that helps speed maintenance. Cab side windows also remove easily for cleaning.

Quick changes

Spin-on engine oil and fuel filters mounted remotely behind the rear door allow quick changes. Extended service intervals reduce downtime for scheduled maintenance, too.

Handy boom tie-down

Integrated boom tie-down enables easy access without having to crawl under the machine to connect chains for transport.

Full-tilt access

Swing open the rear door and tilt up the hood for convenient ground-level reach to dipsticks, fuel- and fluid-filler necks, and filters. For easy drivetrain reach, the operator's station also swings up and out of the way in less than two minutes.

Easier cooler cleanout

Hinged rear door and hydraulic cooler swing open, making trash removal and core cleanout simple. Latched coolers separate easily without the need for tools.



MAINTENANCE SIMPLIFIED.

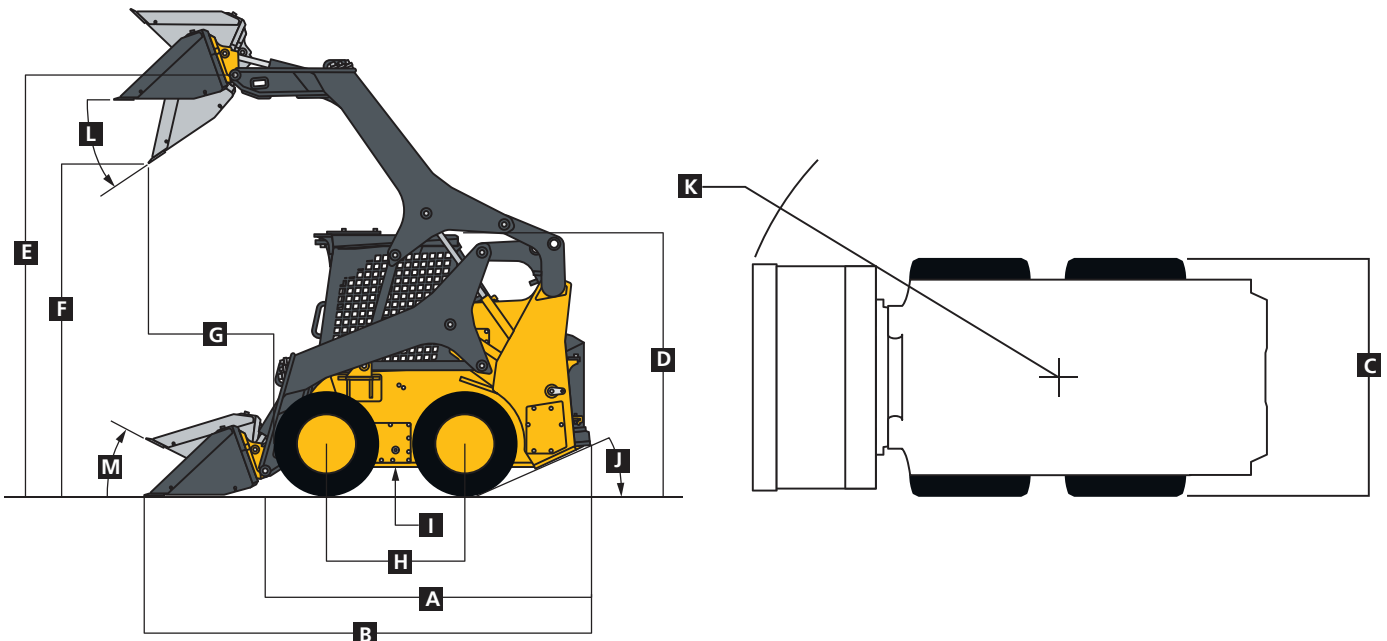


318G

SPECIFICATIONS

Engine		318G
Manufacturer and Model		Yanmar 4TNV86CHT
Non-Road Emission Standard		EPA Final Tier 4/EU Stage IV
Cylinders		4
Net Power (SAE J1349 / ISO 9249)		45.6 kW (61 hp) at 2,600 rpm
Gross Rated Power (ISO 14396)		48.5 kW (65 hp) at 2,600 rpm
Peak Torque		207 Nm (153 ft.-lb.) at 1,690 rpm
Displacement		2.1 L (128 cu. in.)
Rated Engine Speed		2,600 rpm
Torque Rise		16% at 1,690 rpm
Aspiration		Turbocharged
Air Cleaner		Dry dual element
Cooling		
Fan Type		Direct belt drive
Powertrain		
Type		Hydrostatic-manual or electrohydraulic (EH); 4 – 80 HD continuous-loop chain
Speeds		
Single		11.1 km/h (6.9 mph)
2 Speed, High		16.3 km/h (10.1 mph)
Axles		
Maximum Axle Torque		6459 Nm (4,764 lb.-ft.)
Tractive Effort		3552 kgf (7,831 lbf)
Final Drive		High-strength, adjustment-free chains
Brakes		
Hydraulics		
Pump Flow, Standard		63 L/m (17 gpm)
System Pressure at Couplers		23 787 kPa (3,450 psi)
Hydraulic Horsepower Flow (calculated), Standard		25 kW (33 hp)
Auxiliary Hydraulics		Optional connect-under-pressure with flat-faced couplers
Cylinders		
Type		John Deere heat-treated, chrome-plated polished cylinder rods, hardened steel (replaceable bushings) pivot pins
Electrical		
Voltage		12 volt
Battery Capacity		750 CCA standard / 925 CCA with optional cold weather start package
Alternator Rating		70 amp with no air conditioning (A/C) / 90 amp with A/C
Lights		
Standard		Halogen: 2 front and 1 rear
Deluxe		LED: 2 front, 2 side, and 1 rear
Operator's Station		
ROPS (ISO 3471) / FOPS (ISO 3449) structure with quick pivot standard		
Tires/Wheels		
Standard Tire Size		
Serviceability		
Refill Capacity		
Fuel Tank		
Operating Weight		
Base Machine		2970 kg (6,542 lb.)

Machine Dimensions		318G
A	Length Without Bucket	2.63 m (103.0 in.) (8 ft. 7 in.)
B	Length With Foundry Bucket	3.24 m (127.6 in.) (10 ft. 8 in.)
C	Width Without Bucket	1.60 m (62.9 in.) (5 ft. 3 in.)
D	Height to Top of ROPS	1.96 m (77.2 in.) (6 ft. 5 in.)
E	Height to Hinge Pin	3.05 m (120.0 in.) (10 ft. 0 in.)
F	Dump Height With Foundry Bucket	2.40 m (94.3 in.) (7 ft. 10 in.)
G	Dump Reach	
	With Foundry Bucket	0.86 m (34.0 in.)
	With Construction Bucket	1.05 m (41.3 in.) (3 ft. 5 in.)
H	Wheelbase	1.05 m (41.5 in.) (3 ft. 5 in.)
I	Ground Clearance	0.18 m (7.0 in.)
J	Angle of Departure	22.3 deg.
K	Front Turn Radius With Foundry Bucket	2.01 m (79.0 in.) (6 ft. 7 in.)
L	Dump Angle (full lift height)	42 deg.
M	Bucket Rollback (ground level)	30 deg.



Loader Performance		318G
	Tipping Load	1766 kg (3,890 lb.)
	SAE Rated Operating Capacity	883 kg (1,945 lb.)
	With Counterweight	951 kg (2,095 lb.)
	Boom Breakout Force	
	With Foundry Bucket	2384 kg (5,250 lb.)
	With Construction Bucket	2270 kg (5,000 lb.)
	Bucket Breakout Force	
	With Foundry Bucket	2724 kg (6,000 lb.)
	With Construction Bucket	1930 kg (4,250 lb.)



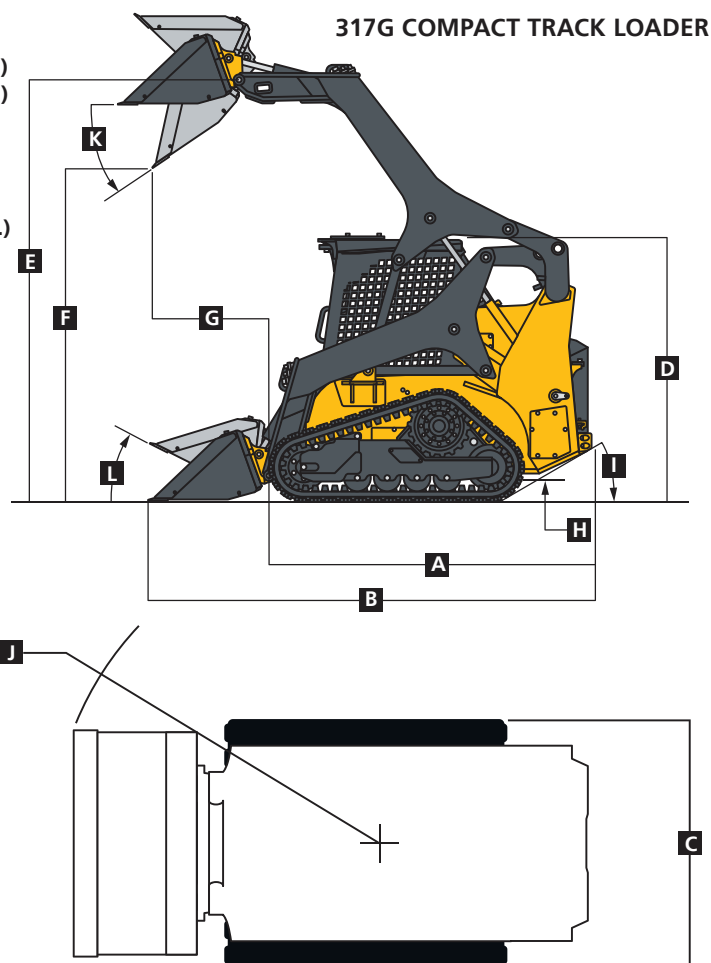
317G

SPECIFICATIONS

Engine	317G
Manufacturer and Model	Yanmar 4TNV86CHT
Non-Road Emission Standard	EPA Final Tier 4/EU Stage IV
Cylinders	4
Net Power (SAE J1349 / ISO 9249)	45.6 kW (61 hp) at 2,600 rpm
Gross Rated Power (ISO 14396)	48.5 kW (65 hp) at 2,600 rpm
Peak Torque	207 Nm (153 ft.-lb.) at 1,690 rpm
Displacement	2.1 L (128 cu. in.)
Rated Engine Speed	2,600 rpm
Torque Rise	16% at 1,690 rpm
Aspiration	Turbocharged
Air Cleaner	Dry dual element
Cooling	
Fan Type	Direct belt drive
Powertrain	
Pump	Axial-piston hydrostatic
Motors	Axial-piston hydrostatic
Single Speed	11.3 km/h (7.0 mph)
Gearbox	High-drive direct-drive motor
Brakes	Integral, automatic, spring-applied, hydraulically released, wet-disc park brake
Undercarriage	
Rubber Tracks	Smooth-ride long-life rubber with steel inserts
Ground Pressure	
With Standard 320-mm (12.6 in.) Track	38 kPa (5.5 psi)
With Optional 400-mm (15.8 in.) Wide Track	31 kPa (4.5 psi)
Track Rollers (per side)	4 triple-flange smooth-ride all-steel rollers
Track Idlers (per side)	1 double-flange and 1 single-flange smooth-ride all-steel rollers
Bearings/Seals (rollers/idlers)	Heavy-duty journal bearings and metal face seals
Tractive Effort	3632 kgf (8,000 lbf)
Hydraulics	
Type	3-spool open-center valve
Pump Flow, Standard	63 L/m (17 gpm)
System Pressure at Couplers	23 787 kPa (3,450 psi)
Hydraulic Horsepower (calculated)	25 kW (33 hp)
Auxiliary Hydraulics	Standard connect-under-pressure with flat-faced couplers
Cylinders	
Type	John Deere heat-treated, chrome-plated, polished cylinder rods, hardened steel (replaceable bushings) pivot pins
Electrical	
Voltage	12 volt
Capacity	
Battery	750 CCA standard / 925 CCA with optional cold weather start package
Reserve	180 min.
Alternator Rating	70 amp with no air conditioning (A/C) / 90 amp with A/C
Lights	
Standard	Halogen: 2 front and 1 rear
Deluxe (optional)	LED: 2 front, 2 side, and 1 rear

317G SPECIFICATIONS

Operator's Station		317G
ROPS (ISO 3471) / FOPS (ISO 3449) structure with quick pivot standard; keyless-start option with sealed-switch module		
Serviceability		
Refill Capacities		
Fuel Tank	71 L (19 gal.)	
Cooling System	12 L (12.7 qt.)	
Operating Weights		
With Standard 320-mm (12.6 in.) Track	3824 kg (8,423 lb.)	
With Optional 400-mm (15.8 in.) Wide Track	3942 kg (8,683 lb.)	
Machine Dimensions		
A Length Without Bucket	2.63 m (103.0 in.) (8 ft. 7 in.)	
B Length		
With Foundry Bucket	3.24 m (127.6 in.) (10 ft. 8 in.)	
With Construction Bucket	3.49 m (137.4 in.) (11 ft. 5 in.)	
C Width Without Bucket		
With Standard 320-mm (12.6 in.) Track	1.65 m (65.1 in.) (5 ft. 5 in.)	
With Optional 400-mm (15.8 in.) Track	1.82 m (71.5 in.) (5 ft. 11 in.)	
D Height to Top of ROPS	1.99 m (78.5 in.) (6 ft. 6 in.)	
E Height to Hinge Pin	3.07 m (121.0 in.) (10 ft. 1 in.)	
F Dump Height		
With Foundry Bucket	2.43 m (95.6 in.) (8 ft. 0 in.)	
With Construction Bucket	2.26 m (89.0 in.) (7 ft. 5 in.)	
G Dump Reach		
With Foundry Bucket	0.79 m (31.0 in.)	
With Construction Bucket With Edge	0.98 m (38.6 in.) (3 ft. 3 in.)	
H Ground Clearance	0.21 m (8.3 in.)	
I Angle of Departure	32.3 deg.	
J Front Turn Radius With Foundry Bucket	1.97 m (77.7 in.) (6 ft. 6 in.)	
K Dump Angle (full lift height)	42 deg.	
L Bucket Rollback (ground level)	30 deg.	
Loader Performance		
Tipping Load	2756 kg (6,070 lb.)	
SAE Rated Operating Capacity		
At 35% Tipping Load	965 kg (2,125 lb.)	
At 50% Tipping Load	1378 kg (3,035 lb.)	
With Counterweight	1022 kg (2,250 lb.)	
Boom Breakout Force		
With Foundry Bucket	2384 kg (5,250 lb.)	
With Construction Bucket	2270 kg (5,000 lb.)	
Bucket Breakout Force		
With Foundry Bucket	2724 kg (6,000 lb.)	
With Construction Bucket	1930 kg (4,250 lb.)	



G-SERIES SKID STEERS

320G / 324G / 330G / 332G



**MASSIVE BUCKET
BREAKOUT FORCES
AND AUXILIARY FLOW**

STAND TALL EXTEND YOUR REACH.

The refined vertical-lift loader design of these compact models rises higher and reaches farther than previous models, for quicker and easier loading. G-Series Skid Steers dish out substantially greater boom breakout force, too, so you accomplish more with just one skid steer. Plus they work more comfortably in tight quarters, and they're easy to trailer. Who says you can't have it all?

Dig in

Increased breakout force over our previous models makes lifting heavy loads easier. Helps heap the bucket and keep big loads coming, too.

Carry more, and get it there

Boom design keeps the load close to the machine for better stability. Low center of gravity, up to 35-deg. bucket rollback, and optional ride control and self-leveling also help keep buckets heaped and forks fully loaded.

Heavy lifter

Increased rated operating capacities of up to 3,600 lb. provide the muscle you need to master heavy loads.

Load warrior

Height to hinge pin up to 11 ft. enables these machines to easily load tandem-axle dump trucks, feed mixers, and fill hoppers. You'll also appreciate the additional reach to truck-bed height when handling pallets of pavers or other heavy materials.

Unleash the beast

Extreme pushing power and bucket breakout forces deliver the tractive effort and leverage to carve out clay, handle heavy loads, and power through piles.

Hydraulic boost

Increased auxiliary hydraulic flow and power enable G-Series Skid Steers to make the most of an even broader range of attachments.

Speed demons

Standard on the 330G and 332G (optional on the 320G and 324G), two-speed drivetrain delivers travel speeds up to 12 mph, for rapid work cycles.

Generous power

Turbocharged diesels meet rigid emission standards, run smooth, and pack plenty of power and torque.

Run longer

Fluid-efficient diesels and large tanks enable daylong operation. So you can get more done between fill-ups.

EH boom performance package

Shorten cycle times and speed production in repetitive boom applications with the optional electrohydraulic (EH) boom performance package available on 330G and 332G models.



BANK ON THIS

HEAVY-DUTY UPTIME.



TRI-COOL™ SYSTEM DESIGN

(330G AND 332G ONLY)

Cool idea

Unique V-plenum (320G and 324G) and Tri-Cool (330G and 332G) designs employ large coolers for impressive performance in severe, high-load conditions.

Handy component access

These skid steers share components such as engines with our CTLs and compact excavators, which streamlines the filters and fluids you need on hand when you run a Deere fleet.

Heavy-duty drivetrains

Oil-bathed final-drive chains withstand the daily grind and almost never need adjustment.

Hydraulics in boom

Auxiliary hydraulic lines and wiring are routed through the boom where they're protected from damage.



Work your connections

Universal Quik-Tatch™ enables you to go from bucket, to forks, to whatever, in just seconds, to accomplish more with one machine. Generous standard and optional high-flow auxiliary hydraulics let you effortlessly run powered attachments such as planetary augers, hydraulic hammers, and trenchers.



Street-smarts

Perfect for concrete or asphalt flatwork, our angle brooms, cold planers, vibratory rollers, hydraulic hammers, and a wide range of buckets help you master roadwork.

Cleared for takeoff

A rugged root rake, rotary cutter, or mulching head can help tackle tough land-clearing tasks.

Extra help on the farm

For hauling hay, cleaning pens, rebedding stalls, or any number of other agricultural chores, we've got bale huggers, bale spears, silage defacers, material/manure scrapers, grapples, forks, and buckets to get it done.

Landscape tools

Landscape and nursery options include nursery forks, rotary tillers, planetary augers, pallet forks, power rakes, dozer blades, and roller levels, to name a few.



AT HOME IN THE CAB

COMFORTABLE AND EFFICIENT OPERATION.

Spacious, comfortable cab is tightly sealed to keep out noise and dust. Available options include a four-season cab, Bluetooth® radio, and a heated seat.



**OPTIONAL
4-SEASON CAB
FOR ALL-WEATHER
PRODUCTIVITY**

Heads-up operation

Easy-to-read LCD monitor provides a wealth of machine data and control — including vital operating conditions and advanced diagnostics.

Push-button convenience

Optional sealed-switch module controls keyless start and anti-theft settings, plus fingertip activation of numerous machine functions including optional ride control and self-leveling.

All-weather comfort

Add a heated air-suspension seat to the heated and air-conditioned pressurized cab to enhance comfort all year.

Light it up

Excellent all-around visibility has been further enhanced with customer-inspired LED side-lighting and rearview-camera options.

Get good grades

Available on the 330G and 332G, optional onboard grade-indication provides a real-time readout of cross-slope (roll of the machine) and mainfall slope (pitch of the machine) on the in-cab monitor:

- Reference **absolute value**, or machine relationship to an absolute flat plane, to easily grade a flat pad.
- Access **relative value**, or machine relationship to the existing grade, to make a steeper existing grade.

Your controls, your way

Choose the control styles and performance features that best fit your needs:

- Electrohydraulic (EH) ISO-pattern joystick controls come standard on the 330G and 332G (optional on the 320G and 324G)
- Optional ISO-H switchable joystick controls and EH joystick performance package on all models*
- Mechanical foot controls come standard on the 320G and 324G

- Optional EH 4-way switchable controls, including EH foot control, ISO joystick control, H-pattern joystick control, and ISO and foot controls on the 330G and 332G
- Optional ISO controls with programmable detents with the EH joystick performance package* and the EH boom performance package on the 330G and 332G†

*EH joystick performance package features switchable accelerator/decelerator, selectable propel speeds, creep control, boom- and bucket-speed settings, and 12-volt 3- and 14-pin attachment-control harness with dash-mounted 4th-function rocker switch.

†EH boom performance package features include EH bucket self-level up and down, return to dig, return to carry, and boom-height kick-out.

JDLink™ machine monitoring

Optional JDLink provides machine data and health alerts to help you decrease costly downtime.

Easy cab cleaning

If you run a rental yard or are just a neat freak, you'll appreciate the convenient cab-footwell floor access that helps speed cleanout. Cab side windows also remove easily for cleaning.

Up and away

Tilt the hood up for convenient ground-level access to dipstick, fuel- and fluid-filler necks, and filters. Operator's station swings up and out of the way in less than five minutes for wide-open drivetrain access.

Cooler core cleanout

Hinged hood and easy-to-remove side shields yield wide-open access to coolers, simplifying core cleanout. Fan option can be set to automatically reverse to clear core-clogging buildup.

Effortless service checks

Conveniently positioned dipstick and filler necks feature color-coded handles and caps to simplify checks and additions. Handy access eases refills of both fuel and diesel exhaust fluid (DEF)* tanks. See-through reservoirs and sight gauges reveal hydraulic oil and windshield washer fluid levels at a glance.

**330G and 332G only; DEF fluid not required on the 320G and 324G.*



MAINTENANCE SIMPLIFIED.



320G / 324G SPECIFICATIONS

Engine	320G	324G
Manufacturer and Model	Yanmar 4TNV98C (optional 4TNV98CT)	Yanmar 4TNV98T Yanmar 4TNV98CT Yanmar 4TNV98T
Non-Road Emission Standard	EPA Final Tier 4/ EU Stage IV	EPA Interim Tier 4/ EU Stage IIIA EPA Final Tier 4/ EU Stage IV EPA Interim Tier 4/ EU Stage IIIA
Cylinders	4	4
Gross Rated Power (ISO 14396)	51.7 kW (69 hp) at 2,500 rpm	55.0 kW (74 hp) at 2,500 rpm
Net Peak Power (SAE J1349 / ISO 9249)	49.4 kW (66 hp) at 2,500 rpm	52.5 kW (70 hp) at 2,500 rpm 52.7 kW (71 hp) at 2,500 rpm
Peak Torque	241 Nm (178 lb.-ft.) at 1,625 rpm	280 Nm (207 ft.-lb.) at 1,800 rpm 284 Nm (209 ft.-lb.) at 1,800 rpm
Displacement	3.3 L (203 cu. in.)	3.3 L (203 cu. in.)
Rated Engine Speed	2,500 rpm	2,500 rpm
Torque Rise	22% at 1,625 rpm	34% at 1,800 rpm
Aspiration	Naturally aspirated (optional turbocharger)	Turbocharged
Air Cleaner	Dry dual element	Dry dual element
Cooling	320G / 324G	
Fan Type	Variable-speed hydraulic drive standard / reversing fan drive optional	
Powertrain		
Type	Hydrostatic-manual or electrohydraulic; 4 – 80 heavy-duty (HD) continuous-loop chain	
Travel Speeds		
Single Speed, Standard	11.1 km/h (6.9 mph)	
2 Speed, High, Optional	17.9 km/h (11.1 mph)	
Axles	Induction-hardened, 1-piece forged axle shafts with maintenance-free oil-bath lubrication of inner and outer axle bearings	
Maximum Axle Torque	6771 Nm (4,994 lb.-ft.)	
Tractive Effort	3220 kgf (7,491 lbf)	
Final Drive	High-strength, adjustment-free chains	
Brakes	Integral, automatic, spring-applied, hydraulically released, wet-disc park brake	
Hydraulics	320G	324G
Pump Flow		
Standard	78 L/m (21 gpm)	
Total with High-Flow Option	112 L/m (30 gpm)	
System Pressure at Couplers	22 408 kPa (3,250 psi)	
Hydraulic Horsepower Flow (calculated)		
Standard	29 kW (39 hp)	
High Flow	42 kW (56 hp)	
Auxiliary Hydraulics	Connect-under-pressure with flat-faced couplers	
Cylinders	320G / 324G	
Type	John Deere heat-treated, chrome-plated polished cylinder rods, hardened steel (replaceable bushings) pivot pins	
Electrical		
Voltage	12 volt	
Battery Capacity	750 CCA standard / 925 CCA optional	
Alternator Rating	75 amp	
Lights	Halogen: 2 front and 1 rear standard / deluxe LED (4 front and 1 rear) optional	
Operator's Station		
ROPS (ISO 3471) / FOPS (ISO 3449) structure with quick-pivot standard		
Tires/Wheels		
Standard Tire Size	12 x 16.5 12 PR SKS	
Serviceability		
Refill Capacity		
Fuel Tank	79 L (21 gal.)	
Operating Weights	320G	324G
	EPA Final Tier 4/EU Stage IV and EPA Interim Tier 4/EU Stage IIIA	EPA Final Tier 4/EU Stage IV and EPA Interim Tier 4/EU Stage IIIA
Base Machine	3246 kg (7,150 lb.)	3496 kg (7,700 lb.)

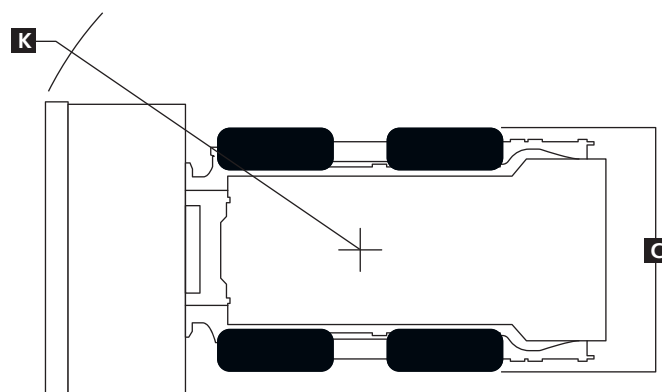
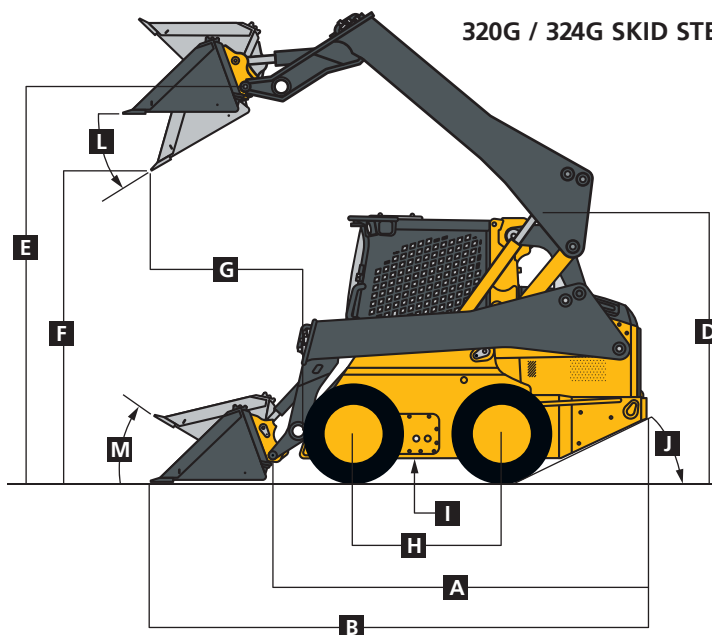
While general information, pictures, and descriptions are provided, some illustrations and text may include product options and accessories NOT AVAILABLE in all regions, and in some countries products and accessories may require modifications or additions to ensure compliance with the local regulations of those countries.

320G / 324G SPECIFICATIONS



Machine Dimensions	320G	324G
A Length without Bucket	2.85 m (112.3 in.) (9 ft. 4 in.)	2.85 m (112.3 in.) (9 ft. 4 in.)
B Length		
With Foundry Bucket	3.46 m (136.3 in.) (11 ft. 4 in.)	3.46 m (136.3 in.) (11 ft. 4 in.)
With Construction Bucket	3.71 m (146.1 in.) (12 ft. 2 in.)	3.71 m (146.1 in.) (12 ft. 2 in.)
C Width without Bucket	1.70 m (67.0 in.) (5 ft. 7 in.)	1.70 m (67.0 in.) (5 ft. 7 in.)
D Height to Top of ROPS	2.06 m (81.1 in.) (6 ft. 9 in.)	2.06 m (81.1 in.) (6 ft. 9 in.)
E Height to Hinge Pin	3.10 m (122.2 in.) (10 ft. 2 in.)	3.20 m (126.0 in.) (10 ft. 6 in.)
F Dump Height		
With Foundry Bucket	2.48 m (97.7 in.) (8 ft. 2 in.)	2.59 m (102.1 in.) (8 ft. 6 in.)
With Construction Bucket	2.31 m (91.0 in.) (7 ft. 7 in.)	2.43 m (95.5 in.) (8 ft. 0 in.)
G Dump Reach		
With Foundry Bucket	0.74 m (29.2 in.)	0.76 m (29.9 in.)
With Construction Bucket	0.93 m (36.4 in.) (3 ft. 0 in.)	0.95 m (37.3 in.) (3 ft. 1 in.)
H Wheelbase	1.12 m (44.2 in.) (3 ft. 8 in.)	1.12 m (44.2 in.) (3 ft. 8 in.)
I Ground Clearance	0.24 m (9.3 in.)	0.24 m (9.3 in.)
J Angle of Departure	28 deg.	28 deg.
K Front Turn Radius with Foundry Bucket	2.02 m (79.6 in.) (6 ft. 8 in.)	2.02 m (79.6 in.) (6 ft. 8 in.)
L Dump Angle (full lift height)	43 deg.	41 deg.
M Bucket Rollback (ground level)	33 deg.	34 deg.

320G / 324G SKID STEERS



Loader Performance	320G	324G
	<i>EPA Final Tier 4/EU Stage IV and EPA Interim Tier 4/EU Stage IIIA</i>	<i>EPA Final Tier 4/EU Stage IV and EPA Interim Tier 4/EU Stage IIIA</i>
Tipping Load	1989 kg (4,380 lb.)	2443 kg (5,380 lb.)
SAE Rated Operating Capacity	994 kg (2,190 lb.)	1221 kg (2,690 lb.)
With Counterweight	1067 kg (2,350 lb.)	1294 kg (2,850 lb.)
Boom Breakout Force		
With Foundry Bucket	1692 kg (3,725 lb.)	2384 kg (5,250 lb.)
With Construction Bucket	1589 kg (3,500 lb.)	2157 kg (4,750 lb.)
Bucket Breakout Force		
With Foundry Bucket	2724 kg (6,000 lb.)	3973 kg (8,750 lb.)
With Construction Bucket	1905 kg (4,200 lb.)	2724 kg (6,000 lb.)



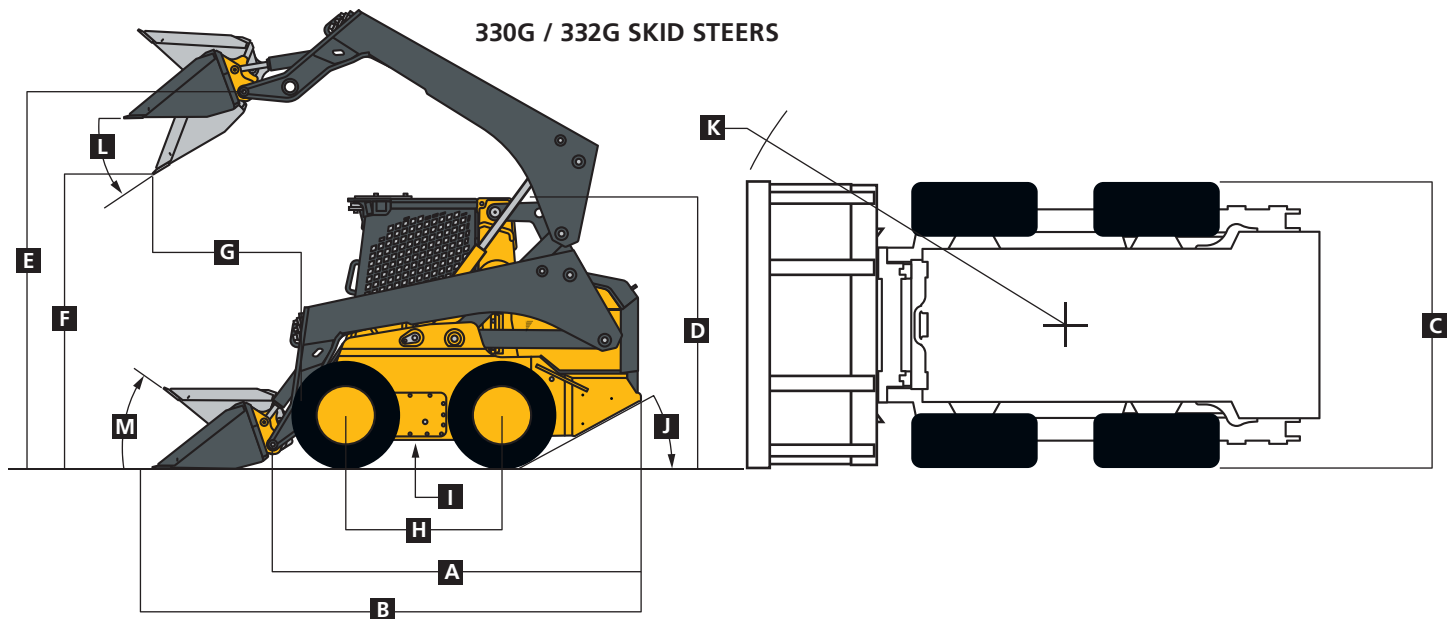
330G / 332G SPECIFICATIONS

Engine	330G		332G	
Manufacturer and Model	Yanmar 4TNV94FHT	Yanmar 4TNV94CHT	Yanmar 4TNV94FHT	Yanmar 4TNV94CHT
Non-Road Emission Standard	EPA Final Tier 4/ EU Stage IV	EPA Interim Tier 4/ EU Stage IIIB	EPA Final Tier 4/ EU Stage IV	EPA Interim Tier 4/ EU Stage IIIB
Cylinders	4	4	4	4
Gross Rated Power (ISO 14396)	68.0 kW (91.2 hp) at 2,500 rpm		74.6 kW (100 hp) at 2,500 rpm	
Net Peak Power (SAE J1349 / ISO 9249)	66.0 kW (88.5 hp) at 2,500 rpm		72.0 kW (96.6 hp) at 2,500 rpm	
Peak Torque	382 Nm (281.8 ft.-lb.) at 1,700 rpm		395 Nm (291.3 ft.-lb.) at 1,700 rpm	
Displacement	3.1 L (186.3 cu. in.)	3.1 L (186.3 cu. in.)	3.1 L (186.3 cu. in.)	3.1 L (186.3 cu. in.)
Rated Engine Speed	2,500 rpm	2,500 rpm	2,500 rpm	2,500 rpm
Torque Rise	47% at 1,700 rpm	47% at 1,700 rpm	39% at 1,700 rpm	39% at 1,700 rpm
Aspiration	330G and 332G turbocharged, intercooled			
Air Cleaner	Dry dual element	Dry dual element	Dry dual element	Dry dual element
Cooling	330G / 332G			
Fan Type	Variable-speed hydraulic drive standard / reversing fan drive optional			
Powertrain	330G		332G	
Type	Electrohydraulic (EH); 4 – 100 heavy-duty (HD) continuous-loop chain			
Travel Speeds				
Low	11.3 km/h (7 mph)		11.3 km/h (7 mph)	
High	19.3 km/h (12 mph)		19.3 km/h (12 mph)	
Axles	Induction-hardened, 1-piece forged axle shafts with maintenance-free oil-bath lubrication of inner and outer axle bearings			
Maximum Axle Torque	8480 Nm (6,235 lb.-ft.)		9289 Nm (6,830 lb.-ft.)	
Tractive Effort	3905 kgf (8,610 lbf)		4218 kgf (9,300 lbf)	
Final Drive	High-strength, adjustment-free chains		High-strength, adjustment-free chains	
Brakes	Integral, automatic, spring-applied, hydraulically released, wet-disc park brake			
Hydraulics				
Pump Flow				
Standard	80 L/m (23.5 gpm)		95 L/m (25.0 gpm)	
Total with High-Flow Option	138 L/m (36.5 gpm)		156 L/m (41.1 gpm)	
System Pressure at Couplers	23 787 kPa (3,450 psi)		23 787 kPa (3,450 psi)	
Hydraulic Horsepower Flow (calculated)				
Standard	35 kW (47 hp)		38 kW (50 hp)	
High Flow	55 kW (74 hp)		62 kW (83 hp)	
Auxiliary Hydraulics	330G and 332G connect-under-pressure with flat-faced couplers			
Cylinders	330G / 332G			
Type	John Deere heat-treated, chrome-plated polished cylinder rods, hardened steel (replaceable bushings) pivot pins			
Electrical				
Voltage	12 volt			
Battery Capacity	925 CCA			
Alternator Rating	90 amp			
Lights	Halogen: 2 front and 1 rear standard / deluxe LED (4 front and 1 rear) optional			
Operator's Station				
ROPS (ISO 3471) / FOPS (ISO 3449) structure with quick-pivot standard				
Tires/Wheels	330G		332G	
Standard Tire Size	14 x 17.5 12 PR Extra Wall		14 x 17.5 14 PR Hauler	
Serviceability	330G / 332G			
Refill Capacity				
Fuel Tank	96.5 L (25.5 gal.)			
Operating Weights	330G		332G	
	EPA Final Tier 4/ EU Stage IV	EPA Interim Tier 4/ EU Stage IIIB	EPA Final Tier 4/ EU Stage IV	EPA Interim Tier 4/ EU Stage IIIB
Base Machine	4495 kg (9,900 lb.)	4449 kg (9,800 lb.)	4540 kg (10,000 lb.)	4495 kg (9,900 lb.)

330G / 332G SPECIFICATIONS



Machine Dimensions	330G	332G
A Length without Bucket	3.10 m (122.0 in.) (10 ft. 2 in.)	3.10 m (122.0 in.) (10 ft. 2 in.)
B Length		
With Foundry Bucket	3.71 m (146.0 in.) (12 ft. 2 in.)	3.71 m (146.0 in.) (12 ft. 2 in.)
With Heavy-Duty Construction Bucket	3.96 m (155.9 in.) (13 ft. 0 in.)	3.96 m (155.9 in.) (13 ft. 0 in.)
C Width without Bucket	1.98 m (78.0 in.) (6 ft. 6 in.)	1.99 m (78.4 in.) (6 ft. 6 in.)
D Height to Top of ROPS	2.19 m (86.3 in.) (7 ft. 2 in.)	2.19 m (86.3 in.) (7 ft. 2 in.)
E Height to Hinge Pin	3.35 m (132.0 in.) (11 ft. 0 in.)	3.35 m (132.0 in.) (11 ft. 0 in.)
F Dump Height		
With Foundry Bucket	2.69 m (106.1 in.) (8 ft. 10 in.)	2.69 m (106.1 in.) (8 ft. 10 in.)
With Heavy-Duty Construction Bucket	2.50 m (98.6 in.) (8 ft. 3 in.)	2.50 m (98.6 in.) (8 ft. 3 in.)
G Dump Reach		
With Foundry Bucket	0.71 m (28.0 in.)	0.71 m (28.0 in.)
With Construction Bucket (no edge)	0.88 m (34.6 in.)	0.88 m (34.6 in.)
H Wheelbase	1.27 m (49.9 in.) (4 ft. 2 in.)	1.27 m (49.9 in.) (4 ft. 2 in.)
I Ground Clearance	0.25 m (9.7 in.)	0.25 m (9.7 in.)
J Angle of Departure	29 deg.	29 deg.
K Front Turn Radius with Foundry Bucket	2.18 m (85.7 in.) (7 ft. 2 in.)	2.18 m (85.7 in.) (7 ft. 2 in.)
L Dump Angle (full lift height)	48 deg.	48 deg.
M Bucket Rollback (ground level)	35 deg.	35 deg.



Loader Performance	330G	332G	
	<i>EPA Final Tier 4/EU Stage IV and EPA Interim Tier 4/EU Stage IIIB</i>	<i>EPA Final Tier 4/ EU Stage IV</i>	<i>EPA Interim Tier 4 / EU Stage IIIB</i>
Tipping Load	2724 kg (6,000 lb.)	3269 kg (7,200 lb.)	3269 kg (7,200 lb.)
SAE Rated Operating Capacity	1362 kg (3,000 lb.)	1634 kg (3,600 lb.)	1634 kg (3,600 lb.)
With Optional Set of Counterweights	1430 kg (3,150 lb.)	1703 kg (3,750 lb.)	1703 kg (3,750 lb.)
Boom Breakout Force			
With Foundry Bucket	3175 kg (7,000 lb.)	3865 kg (8,520 lb.)	3746 kg (8,250 lb.)
With Heavy-Duty Construction Bucket	2724 kg (6,000 lb.)	3519 kg (7,750 lb.)	3519 kg (7,750 lb.)
Bucket Breakout Force			
With Foundry Bucket	4676 kg (10,300 lb.)	6307 kg (13,904 lb.)	6243 kg (13,750 lb.)
With Heavy-Duty Construction Bucket	3450 kg (7,600 lb.)	4200 kg (9,250 lb.)	4200 kg (9,250 lb.)

While general information, pictures, and descriptions are provided, some illustrations and text may include product options and accessories NOT AVAILABLE in all regions, and in some countries products and accessories may require modifications or additions to ensure compliance with the local regulations of those countries.

G-SERIES COMPACT TRACK LOADERS

325G / 331G / 333G

HEAD-TURNING PERFORMANCE

SEE WHAT YOU CAN DO.

Beast mode

Extreme pushing power and bucket breakout forces deliver the tractive effort and leverage to carve out clay, power through piles, and handle heavy loads.

Speedsters

Standard on the 331G and 333G (optional on the 325G), two-speed drivetrain delivers travel speeds over eight mph, for quick work cycles.

Fewer pit stops

Fluid-efficient diesels and large tanks enable daylong operation, letting you do more between fill intervals.

Rock-solid stability

Longer track frames and optimized roller spacing on the 331G and 333G improve balance and stability, to enhance agility and operator comfort.

EH boom performance package

Shorten cycle times and speed production in repetitive boom applications with the optional electrohydraulic (EH) boom performance package available on 331G and 333G models.

Hydraulic boost

Increased auxiliary hydraulic flow and power enable G-Series CTLs to make the most of an even broader range of attachments.





**TRI-COOL™
SYSTEM DESIGN**
(331G AND 333G ONLY)



Cool idea

Unique V-plenum (325G) and Tri-Cool (331G and 333G) designs employ large coolers for impressive performance in severe, high-load conditions.

In-boom hydraulics

Auxiliary hydraulic lines and wiring are routed through the boom where they're protected from damage.

Handy component access

These CTLs share components such as engines with our skid steers and compact excavators, which streamlines the filters and fluids you need on hand when you run a Deere fleet.

Beefed-up track components

Track is longer and rollers and idlers are wider on the 331G and 333G, to increase contact area. Plus, spacing has been optimized to help maximize track life.



**MASSIVE BUCKET
BREAKOUT FORCES
AND AUXILIARY FLOW**



REACH HIGHER WITH LESS EFFORT.

Power lifter

Increased rated operating capacities up to 3,700 lb. give these machines the muscle you need to tote heavy loads.

Load warrior

Height to hinge pin up to 11 ft. enables these CTLs to easily load tandem-axle dump trucks, feed mixers, and fill hoppers. You'll also appreciate the additional reach to truck-bed height when handling pallets of pavers or other heavy materials.

Carry more, spill less

Boom design keeps the load close to the machine for better stability. Low center of gravity, up to 35-deg. bucket rollback, and optional ride control and self-leveling also help keep buckets heaped and forks fully loaded.

Dig in

Breakout force has been increased substantially over our previous models, to make lifting heavy loads easier. Helps heap the bucket and keep big loads coming, too.



BE MORE THINGS TO MORE PEOPLE.

If you're looking for a way to help build your business, John Deere attachments are a great place to start. With more than 100 models, these specialized and general-purpose additions enable you to broaden your abilities, work smarter, and accomplish even more.



Clear it out

A rugged root rake, rotary cutter, or mulching head can help tackle tough land-clearing tasks.

Streetwise

Perfect for concrete or asphalt flatwork, our angle brooms, vibratory rollers, cold planers, hydraulic hammers, and a wide range of buckets let you hit the ground running.

Landscape tools

Landscape and nursery options include nursery forks, rotary tillers, planetary augers, pallet forks, power rakes, landplanes, dozer blades, and roller levels, to list just a few.

Farm hands

For handling hay, cleaning pens, rebedding stalls, or numerous other agricultural chores, we've got the bale huggers, bale spears, silage defacers, grapples, material/manure scrapers, forks, and buckets to get it done.

Get attached

Universal Quik-Tatch™ enables you to go from bucket, to forks, to whatever, in just seconds, to accomplish more with one machine. Generous standard and optional high-flow auxiliary hydraulics let you effortlessly run powered attachments such as planetary augers, hydraulic hammers, and trenchers.

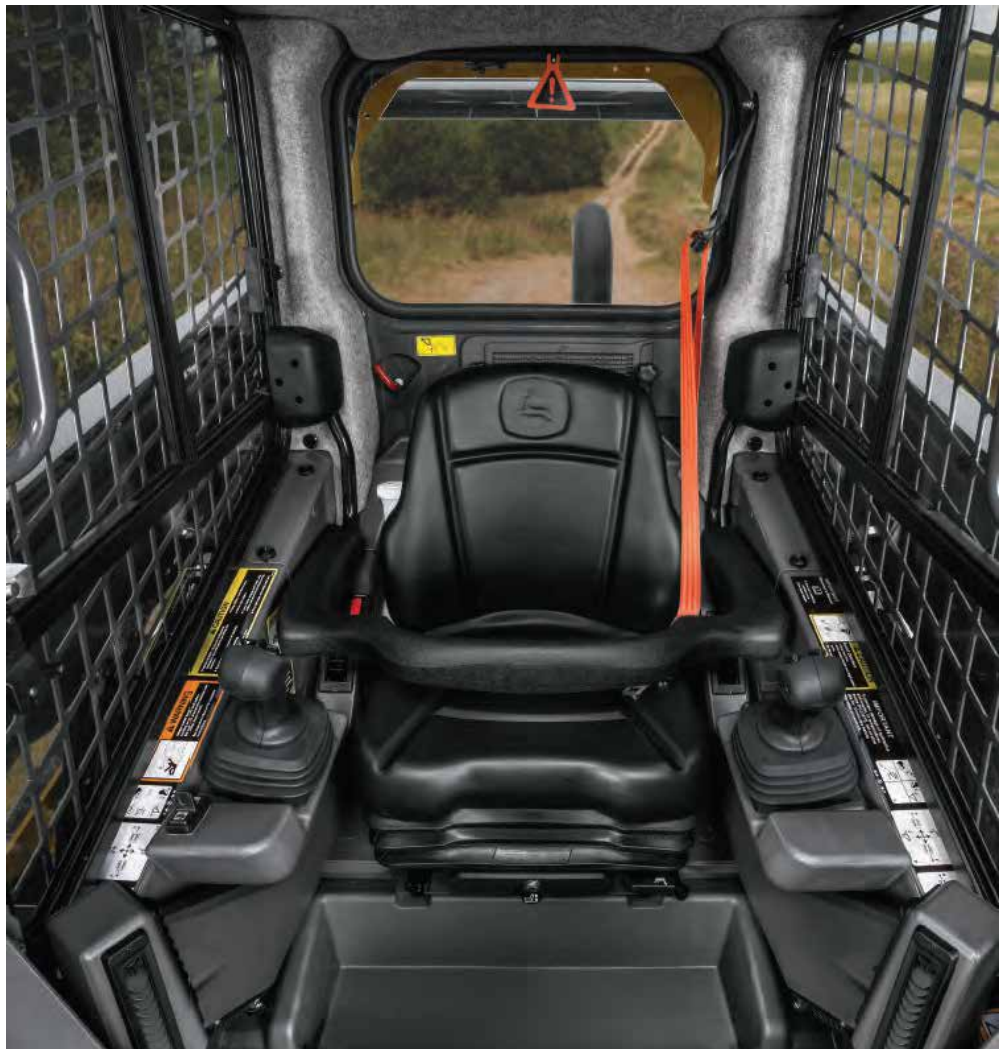
Bucket choices abound

Choose from rock, multipurpose, construction, utility, tooth, grading-heel, and rollout buckets in varying widths and capacities. Extreme-duty 90-in. tooth, serrated, or smooth-edge bucket lets you make the most of every cycle.





OPTIONAL
4-SEASON CAB
FOR ALL-WEATHER PRODUCTIVITY



Your controls, your way

Choose from four different control styles and performance features:

- Standard equipment: Electrohydraulic (EH) ISO-pattern joystick controls on the 325G, 331G, and 333G
- Optional ISO-H switchable joystick controls and EH joystick performance package*
- Optional EH 4-way switchable controls, including EH foot control, ISO joystick control, H-pattern joystick control, and ISO and foot controls on the 331G and 333G
- Optional ISO controls with programmable detents with the EH joystick performance package* and the EH boom performance package on the 331G and 333G†

*EH joystick performance package features switchable accelerator/decelerator, selectable propel speeds, creep control, boom- and bucket-speed settings, and 12-volt 3- and 14-pin attachment-control harness with dash-mounted 4th-function rocker switch.

†EH boom performance package features include EH bucket self-level up and down, return to dig, return to carry, and boom-height kick-out.

Get good grades

Available on the 330G and 332G, optional onboard grade-indication provides a real-time readout of cross-slope (roll of the machine) and mainfall slope (pitch of the machine) on the in-cab monitor:

- Reference **absolute value**, or machine relationship to an absolute flat plane, to easily grade a flat pad.
- Access **relative value**, or machine relationship to the existing grade, to make a steeper existing grade.

Four-season comfort

Add a heated air-suspension seat to the heated and air-conditioned pressurized cab to enhance comfort no matter the weather.

Heads-up operation

Easy-to-read LCD monitor provides a wealth of machine info and control – including vital operating conditions and advanced diagnostics.

Lighten up

Excellent all-around visibility has been further enhanced with customer-inspired LED side-lighting and rearview-camera options.

Push-button convenience

Optional sealed-switch module controls amenities such as keyless start and anti-theft settings, plus fingertip activation of numerous machine functions including optional ride control and self-leveling.

ROOM WITH A VIEW

EFFICIENT OPERATION THAT'S EASY TO SEE.

Spacious, comfortable cab is tightly sealed to keep out noise and dust. Available options include a four-season cab, Bluetooth® radio, and a heated seat.

Simplified checks

Color-coded handles and caps on conveniently positioned dipstick and filler necks simplify checks and additions. Handy access eases refills of both fuel and diesel exhaust fluid (DEF)* tanks. See-through reservoirs and sight gauges reveal hydraulic oil and windshield washer fluid levels at a glance.

**331G and 333G only; DEF fluid not required on the 325G.*

Easy interior maintenance

If you're a neat freak or run a rental yard, you'll appreciate the convenient cab-footwell floor access that helps speed cleanout. Cab side windows also remove easily for cleaning.

Full-tilt service

Tilt the hood up for convenient access from ground level to dipstick, fuel- and fluid-filler necks, and filters. For wide-open drivetrain access, the operator's station swings up and out of the way in less than five minutes.

JDLINK™ machine monitoring

Optional JDLINK provides machine data and health alerts to help you decrease costly downtime.

Generous power

Turbocharged diesels meet rigid emission standards, run smooth, and pack plenty of power and torque.

Convenient cooler cleanout

Hinged hood and easy-to-remove side shields yield wide-open access to coolers, simplifying core cleanout. Fan option can be set to automatically reverse to clear core-clogging buildup.



MAINTENANCE SIMPLIFIED.

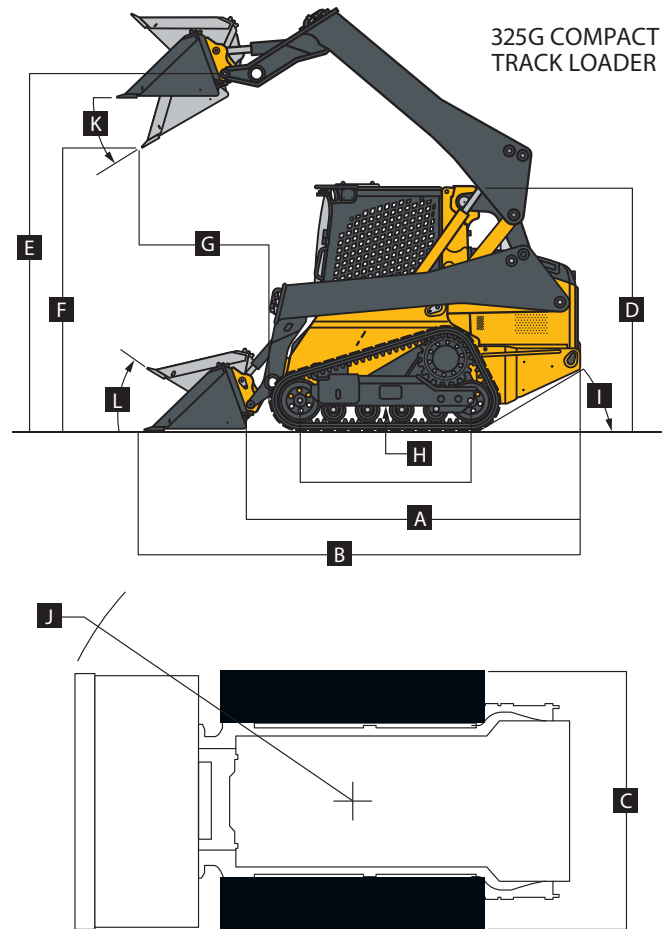


325G SPECIFICATIONS

Engine			325G
Manufacturer and Model	Yanmar 4TNV98CT	Yanmar 4TNV98T	
Non-Road Emission Standard	EPA Final Tier 4/EU Stage IV	EPA Interim Tier 4/EU Stage IIIA	
Cylinders	4	4	
Gross Rated Power (ISO 14396)	54.8 kW (74 hp) at 2,500 rpm	55.0 kW (74 hp) at 2,500 rpm	
Net Power (SAE J1349 / ISO 9249)	52.5 kW (70 hp) at 2,500 rpm	52.7 kW (71 hp) at 2,500 rpm	
Peak Torque	280 Nm (207 lb.-ft.) at 1,800 rpm	284 Nm (209 lb.-ft.) at 1,800 rpm	
Displacement	3.3 L (203 cu. in.)	3.3 L (203 cu. in.)	
Rated Engine Speed	2,500 rpm	2,500 rpm	
Torque Rise	34% at 1,800 rpm	36% at 1,800 rpm	
Aspiration	Turbocharged	Turbocharged	
Air Cleaner	Dry dual element	Dry dual element	
Cooling			
Fan Type	Variable-speed hydraulic drive standard / reversing fan drive optional		
Powertrain			
Pump	Axial-piston hydrostatic		
Controls	Electrohydraulic		
Travel Speeds			
Single Speed, Standard	9.3 km/h (5.8 mph)		
2 Speed, Optional			
Low	8.4 km/h (5.2 mph)		
High	13.2 km/h (8.2 mph)		
Brake	Integral, automatic, spring-applied, hydraulically released wet-disc brake		
Undercarriage			
Rubber Tracks	Smooth-ride long-life rubber with steel inserts		
Track Width			
Standard	320 mm (12.6 in.)		
Optional	400 mm (15.8 in.)		
Ground Pressure			
Standard 320-mm (12.6 in.) Track	39.3 kPa (5.7 psi)		
Optional 400-mm (15.8 in.) Track	32.4 kPa (4.7 psi)		
Track Rollers (per side)	4 triple-flange smooth-ride all-steel rollers		
Track Idlers (per side)	2 double-flange smooth-ride all-steel rollers		
Bearings/Seals (rollers/idlers)	Heavy-duty journal bearings and metal face seals		
Tractive Effort	3859 kgf (8,500 lbf)		
Hydraulics			
Pump Flow			
Standard	78 L/m		
Total with High-Flow Option	120 L/m		
System Pressure at Couplers	23 787 kPa (3,450 psi)		
Hydraulic Horsepower Flow (calculated)			
Standard	27.9 kW (37.4 hp)		
High	40.1 kW (53.7 hp)		
Cylinders			
Type	John Deere heat-treated, chrome-plated polished cylinder rods, hardened steel (replaceable bushings) pivot pins		

325G SPECIFICATIONS

Electrical		325G
Voltage		12 volt
Battery Capacity		750 CCA standard / 925 CCA optional
Alternator Rating		75 amp
Lights		Halogen, 2 front and 1 rear
Operator's Station		
ROPS (ISO 3471) / FOPS (ISO 3449) structure with quick-pivot standard		
Serviceability		
Refill Capacity		
Fuel Tank		79 L (21 gal.)
Operating Weights		
		EPA Final Tier 4/EU Stage IV and EPA Interim Tier 4/EU Stage IIIA
With Standard 320-mm (12.6 in.) Track		4313 kg (9,500 lb.)
With Optional 400-mm (15.8 in.) Track		4381 kg (9,650 lb.)
Machine Dimensions		
A Length without Bucket		2.85 m (112.3 in.) (9 ft. 4 in.)
B Length with Foundry Bucket		3.46 m (136.3 in.) (11 ft. 4 in.)
C Width without Bucket		
With 320-mm (12.6 in.) Track		1.82 m (71.5 in.) (6 ft. 0 in.)
With 400-mm (15.8 in.) Track		1.90 m (74.7 in.) (6 ft. 3 in.)
D Height to Top of ROPS		2.06 m (81.1 in.) (6 ft. 9 in.)
E Height to Hinge Pin		3.20 m (126.1 in.) (10 ft. 6 in.)
F Dump Height with Foundry Bucket		2.59 m (102.1 in.) (8 ft. 6 in.)
G Dump Reach		
With Foundry Bucket		0.75 m (29.7 in.)
With Construction Bucket with Edge		0.94 m (37 in.) (3 ft. 1 in.)
H Ground Clearance		0.24 m (9.3 in.)
I Angle of Departure		30.5 deg.
J Front Turn Radius with Foundry Bucket		2.03 m (80 in.) (6 ft. 8 in.)
K Dump Angle (full lift height)		41 deg.
L Bucket Rollback (ground level)		34 deg.
Loader Performance		
		EPA Final Tier 4/EU Stage IV and EPA Interim Tier 4/EU Stage IIIA
Tipping Load		3360 kg (7,400 lb.)
SAE Rated Operating Capacity with Foundry Bucket		
At 35% Tipping Load		1176 kg (2,590 lb.)
At 50% Tipping Load		1634 kg (3,600 lb.)
Boom Breakout Force		
With Foundry Bucket		2384 kg (5,250 lb.)
With Construction Bucket		2154 kg (4,750 lb.)
Bucket Breakout Force		
With Foundry Bucket		3973 kg (8,750 lb.)
With Construction Bucket		2724 kg (6,000 lb.)





331G / 333G SPECIFICATIONS

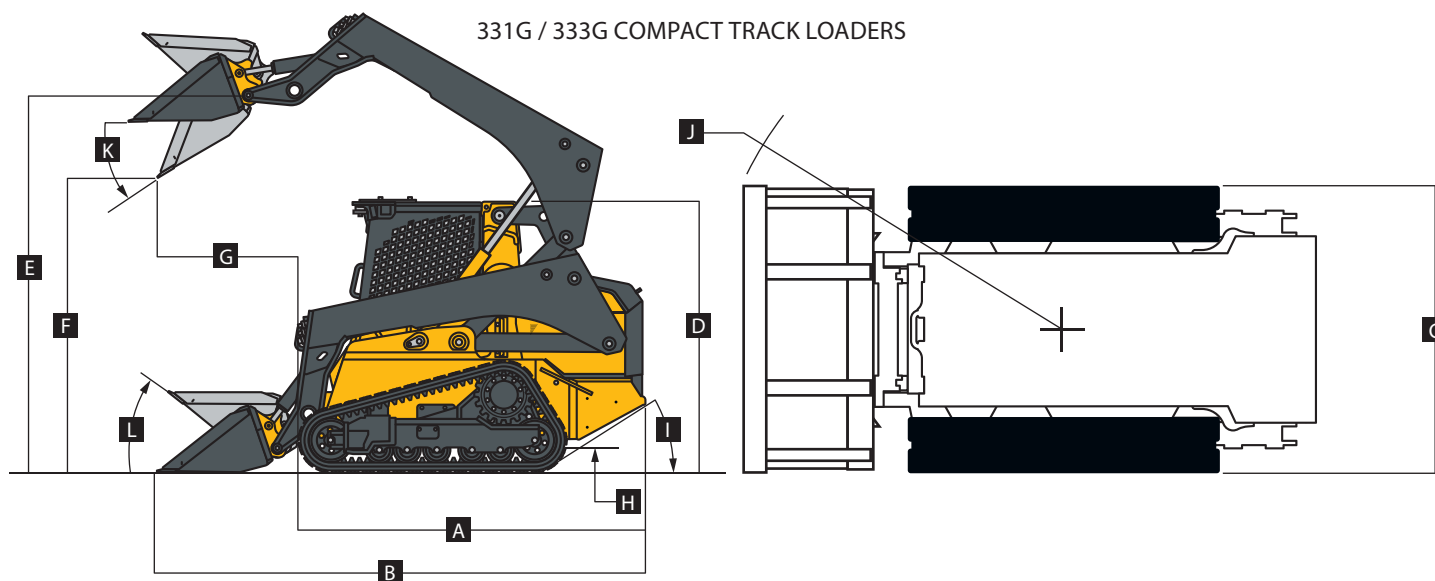
Engine	331G	333G
Manufacturer and Model	Yanmar 4TNV94FHT	Yanmar 4TNV94FHT
Non-Road Emission Standards	EPA Final Tier 4/ EU Stage IV	EPA Final Tier 4/ EU Stage IV
Cylinders	4	4
Gross Rated Power (ISO 14396)	68.0 kW (91.2 hp) at 2,500 rpm	74.6 kW (100 hp) at 2,500 rpm
Net Peak Power (SAE J1349 / ISO 9249)	66.0 kW (88.5 hp) at 2,500 rpm	72.0 kW (96.6 hp) at 2,500 rpm
Peak Torque	382 Nm (281.8 ft.-lb.) at 1,700 rpm	395 Nm (291.3 ft.-lb.) at 1,700 rpm
Displacement	3.1 L (186.3 cu. in.)	3.1 L (186.3 cu. in.)
Rated Engine Speed	2,500 rpm	2,500 rpm
Torque Rise	47% at 1,700 rpm	39% at 1,700 rpm
Aspiration	Turbocharged, intercooled	Turbocharged, intercooled
Air Cleaner	Dry dual element	Dry dual element
Cooling	331G / 333G	
Fan Type	Variable-speed hydraulic drive standard / reversing fan drive optional	
Powertrain	331G	333G
Pump	Axial-piston hydrostatic	Axial-piston hydrostatic
Controls	Electrohydraulic	Electrohydraulic
Travel Speeds		
Low	8.5 km/h (5.3 mph)	8.5 km/h (5.3 mph)
High	12.6 km/h (7.8 mph)	12.6 km/h (7.8 mph)
Brakes	Integral, automatic, spring-applied, hydraulically released wet-disc brake	
Undercarriage		
Rubber Tracks	Smooth-ride long-life rubber with steel inserts	
Track Width		
Standard	400 mm (15.8 in.)	450 mm (17.7 in.)
Optional	450 mm (17.7 in.)	400 mm (15.8 in.)
Ground Pressure		
400-mm (15.8 in.) Track (standard on 331G / optional on 333G)	38.1 kPa (5.5 psi)	38.4 kPa (5.6 psi)
450-mm (17.7 in.) Track (optional on 331G / standard on 333G)	33.9 kPa (4.9 psi)	34.1 kPa (5.0 psi)
Track Rollers (per side)	5 triple-flange smooth-ride all-steel rollers	5 triple-flange smooth-ride all-steel rollers
Track Idlers (per side)	2 double-flange smooth-ride all-steel rollers	2 double-flange smooth-ride all-steel rollers
Bearings/Seals (rollers/idlers)	Heavy-duty journal bearings and metal face seals	Heavy-duty journal bearings and metal face seals
Tractive Effort	5221 kgf (11,500 lbf)	5221 kgf (11,500 lbf)
Hydraulics		
Pump Flow		
Standard	80 L/m (23.5 gpm)	95 L/m (25.0 gpm)
Total with High-Flow Option	138 L/m (36.5 gpm)	156 L/m (41.1 gpm)
System Pressure at Couplers	23 787 kPa (3,450 psi)	23 787 kPa (3,450 psi)
Hydraulic Horsepower Flow (calculated)		
Standard	35 kW (47 hp)	38 kW (50 hp)
High	55 kW (74 hp)	62 kW (83 hp)
Cylinders	331G / 333G	
Type	John Deere heat-treated, chrome-plated, polished cylinder rods, hardened steel (replaceable bushings) pivot pins	
Electrical		
Voltage	12 volt	
Battery Capacity	925 CCA	
Alternator Rating	90 amp	
Lights	Halogen: 2 front and 1 rear standard / deluxe LED: 4 front and 1 rear optional	
Operator's Station		
ROPS (ISO 3471) / FOPS (ISO 3449) structure with quick-pivot standard		
Serviceability		
Refill Capacity		
Fuel Tank	114 L (30 gal.)	

331G / 333G SPECIFICATIONS



Operating Weight	331G		333G	
	EPA Final Tier 4/ EU Stage IV	EPA Interim Tier 4/ EU Stage IIIB	EPA Final Tier 4/ EU Stage IV	EPA Interim Tier 4/ EU Stage IIIB
With Standard 400-mm (15.8 in.) Track	5403 kg (11,900 lb.)	5357 kg (11,800 lb.)	—	—
With Standard 450-mm (17.7 in.) Track	—	—	5493 kg (12,100 lb.)	5448 kg (12,000 lb.)
Machine Dimensions	331G / 333G			
A Length without Bucket	3.10 m (122 in.) (10 ft. 2 in.)			
B Length with Foundry Bucket	3.71 m (146 in.) (12 ft. 2 in.)			
C Width without Bucket				
With 400-mm (15.8 in.) Track	2.00 m (78.9 in.) (6 ft. 7 in.)			
With 450-mm (17.7 in.) Track	2.05 m (80.7 in.) (6 ft. 9 in.)			
D Height to Top of ROPS	2.20 m (86.7 in.) (7 ft. 3 in.)			
E Height to Hinge Pin	3.35 m (132 in.) (11 ft. 0 in.)			
F Dump Height with Foundry Bucket	2.69 m (106.1 in.) (8 ft. 10 in.)			
G Dump Reach				
With Foundry Bucket	0.71 m (28 in.)			
With Construction Bucket (no edge)	0.88 m (34.6 in.)			
H Ground Clearance	0.24 m (9.4 in.)			
I Angle of Departure	31 deg.			
J Front Turn Radius with Foundry Bucket	2.18 m (85.7 in.) (7 ft. 2 in.)			
K Dump Angle (full lift height)	48 deg.			
L Bucket Rollback (ground level)	35 deg.			

331G / 333G COMPACT TRACK LOADERS



Loader Performance	331G	333G
	EPA Final Tier 4/EU Stage IV and EPA Interim Tier 4/EU Stage IIIB	EPA Final Tier 4/EU Stage IV and EPA Interim Tier 4/EU Stage IIIB
Tipping Load with Foundry Bucket	4021 kg (8,857 lb.)	4799 kg (10,570 lb.)
SAE Rated Operating Capacity		
At 35% Tipping Load	1407 kg (3,100 lb.)	1680 kg (3,700 lb.)
At 50% Tipping Load	2011 kg (4,429 lb.)	2399 kg (5,285 lb.)
Boom Breakout Force		
With Foundry Bucket	2724 kg (6,000 lb.)	3746 kg (8,250 lb.)
With Construction Bucket	2724 kg (6,000 lb.)	3519 kg (7,750 lb.)
Bucket Breakout Force		
With Foundry Bucket	4688 kg (10,325 lb.)	6243 kg (13,750 lb.)
With Heavy-Duty Construction Bucket	3450 kg (7,600 lb.)	4200 kg (9,250 lb.)

COMPACT EXCAVATORS

E18ZS / E36ZS

SIZABLE IMPACT



BUILT TOUGH

Boom cylinder is positioned above the boom where it's better protected from impact. Durable, tight-fitting steel bushings are easily interchangeable, further minimizing downtime.



EASY FIT

Variable-width undercarriage can be hydraulically retracted to access tight quarters where handwork was once required, then easily extended to provide a stable working platform.



DIG AND GO

Two-speed travel with automatic shifting provides faster transport speeds across large work areas or to the next job.



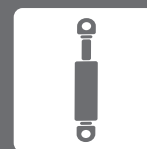
TAKE A LOOK AROUND

Four-way adjustable windshield and sliding side windows enable excellent all-around visibility while improving airflow.



WORK IN TIGHT SPACES

Zero-tail-swing design allows the operator to rotate the machine in confined areas. Independent boom swing provides additional maneuverability of the attachment in tight working conditions.



SMOOTH CONTROL

Load-sensing hydraulic system efficiently manages power for multiple functions, delivering smooth boom and bucket control with minimal effort.



STANDARD BACKFILL BLADE

Backfill blade adds versatility, allowing the E36ZS to grade, cleanup and fill. Provides extra stability when working on uneven terrain, too.



GET COMFORTABLE

Spacious operator station features plenty of head and legroom, an adjustable seat and armrests, numerous storage compartments, and a USB charging port and auxiliary input for your digital devices.



EASY TO MAINTAIN

Cab tilt provides quick access to maintenance components. Large engine hood and removable covers open wide to speed ground-level service. Grease fittings are also within easy reach.

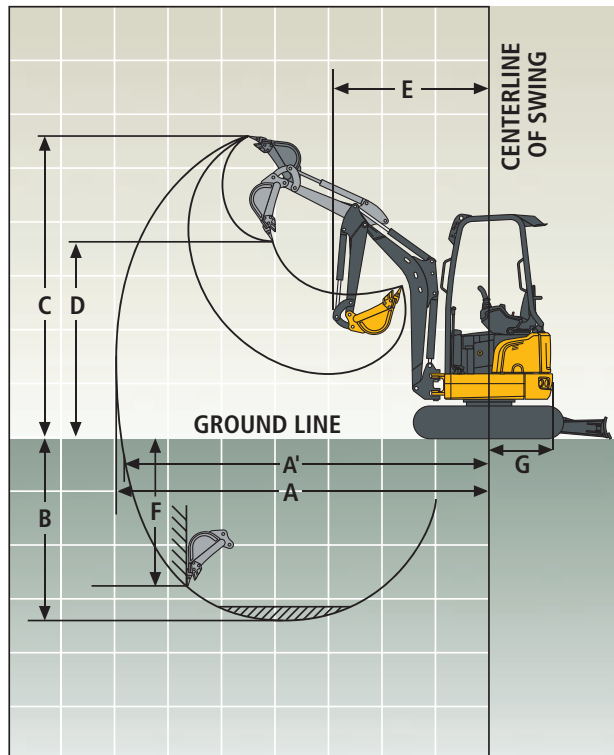


E18ZS SPECIFICATIONS

Engine	E18ZS		
Manufacturer and Model	Yanmar 3TNV76-SNSE 12		
Non-Road Emission Standard	EU Stage IIIA		
Gross Rated Power (ISO 14396)	13.8 kW at 2,200 rpm		
Maximum Gross Torque (SAE J1995 and ISO 3046)	65.8 Nm @ 1,600 ±100 rpm		
Cylinders	3		
Piston Displacement	1.116 L		
Cooling			
Pusher-type cooling fan			
Hydraulics			
Designed for high digging capacity, productivity, and operating precision, and excellent fuel economy; summation system, boom and swing priority, and boom and arm regeneration provide optimum performance			
Main Pump	Variable-displacement pump		
Maximum Discharge Flow	1 x 39.6 l/m (1 x 18 cc/rev at 100% efficiency)		
Pilot Pump	External pilot unit with safety valve and 2-speed control valve		
System Operating Pressure			
Circuits			
Implement	24.0 MPa		
Travel	24.0 MPa		
Swing	15.0 MPa		
Pilot	3.0 MPa		
Auxiliary	Preset to 24.0-MPa 1-way mode		
Controls	Hydraulic pilot controls with hydraulic-enable lever		
Powertrain			
Travel Motor	Axial piston motor		
Maximum Drawbar Pull	12.9 kN		
Travel Speeds			
High	4.5 km/h		
Low	2.6 km/h		
Cylinders			
	Bore Diameter	Rod Diameter	Stroke
Boom (2)	65 mm	32 mm	490 mm
Arm (1)	55 mm	30 mm	365 mm
Bucket (1)	55 mm	30 mm	344 mm
Swing System			
Motor	Gerotor		
Speed	9.5 rpm		
Torque	1828 Nm		
Undercarriage			
Includes lubricated rollers, idlers, track adjusters (with shock-absorbing spring), and greased and sealed track chain with rubber track			
Center Frame	X-leg type with forged swing-bearing support integrally welded with reinforced box-section track frames		
Track Frame	Pentagonal box type		
Number of Shoes (each side)	36		
Rollers (each side)			
Carrier	0		
Track	3		
Track Guides (each side)	2		
Shoe Width	230 mm		
Weight and Ground Pressure			
Standard configuration with 940-mm arm; 420-mm, 0.05-m³ bucket; and rubber track			
Operating Weight	1836 kg		
Ground Pressure	29.4 kPa		
Counterweight	146 kg		
Electrical System			
Alternator Rating	55 amp		
Work Lights	3 front lights (2 on canopy, 1 on boom) and 1 rear light on canopy		

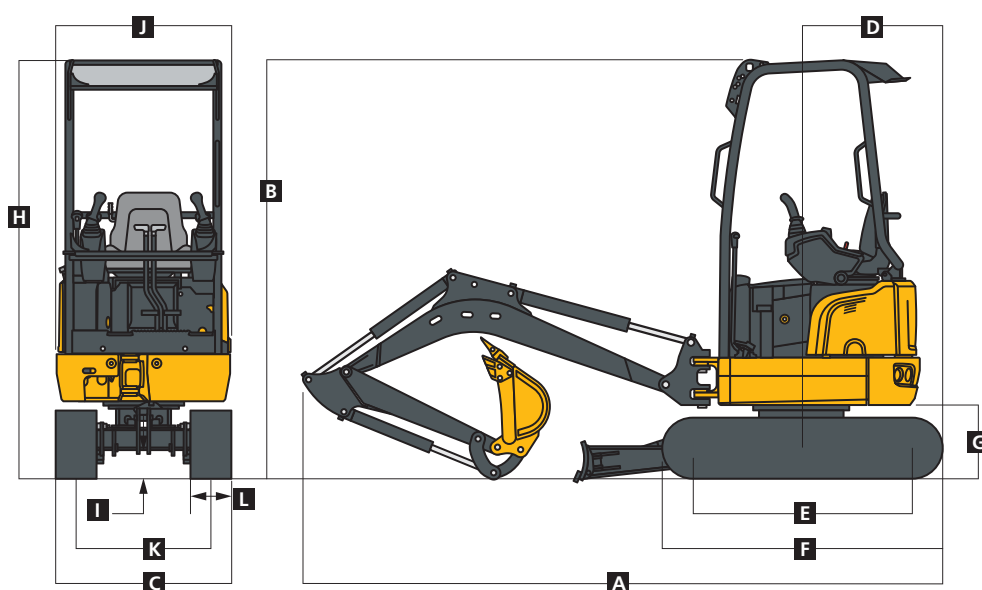
E18^{zs} SPECIFICATIONS

Serviceability		E18ZS
Refill Capacities (standard fill)		
Fuel Tank		22 L
Engine Coolant		3.5 L
Engine Oil		3.5 L
Travel Final Drive (each side)		0.33 L
Hydraulic System		21 L
Hydraulic Tank		11 L
Operating Dimensions		
Arm Length		940 mm
Tool Force		
Bucket		18.7 kN
Arm		9.1 kN
		<i>Tooth</i>
A Maximum Reach		3899 mm
A Maximum Reach at Ground Level		3848 mm
B Maximum Digging Depth		2326 mm
C Maximum Cutting Height		3462 mm
D Maximum Loading Height		2436 mm
E Minimum Slew Radius		1372 mm
F Maximum Vertical Wall Digging Depth		1713 mm
G Tail-Swing Radius		660 mm



E18ZS SPECIFICATIONS

Machine Dimensions		E18ZS
Arm Length		940 mm
A Overall Length		3584 mm
B Overall Height		2362 mm
C Overall Width (over tracks)		
Minimum		990 mm
Maximum		1300 mm
D Tail-Swing Radius		660 mm
E Tumbler Distance		1223 mm
F Overall Length of Crawler		1251 mm
G Counterweight Clearance		448 mm
H Overall Height (to top of cab)		2362 mm
I Ground Clearance		156 mm
J Overall Width of Upperstructure		980 mm
K Track Gauge		760 mm
L Shoe Width		230 mm



E18ZS Lift Capacities

Boldface type indicates stability-limited capacity; lightface type indicates hydraulically limited capacities, in kg. Ratings at bucket pivot with no bucket installed; machine equipped with 940-mm arm, no bucket, and rubber track, and situated on firm uniform supporting surface. Total load includes weight of cables, hook, etc.; capacities are based on ISO 10567.

HORIZONTAL DISTANCE FROM CENTERLINE OF ROTATION																		
LOAD POINT HEIGHT	1.5 m			2.0 m			2.5 m			3.0 m			Maximum Reach					
	Telescopic			Telescopic			Telescopic			Telescopic			Telescopic					
	Blade	Travel	Gear	Blade	Blade	Travel	Gear	Blade	Blade	Travel	Gear	Blade	Blade	Travel	Gear	Blade		
	Down	Extended	Atop	Down	Extended	Atop	Down	Extended	Atop	Down	Extended	Atop	Down	Extended	Atop	Down	Extended	Atop
2.5 m							469	306	277				474	302	274			
2.0 m							431	308	279				468	231	207			
1.0 m				781	410	374	591	291	262	491	218	194	435	182	161			
Ground Line				916	376	339	653	271	242	493	208	184	404	179	157			
-1.0 m	1034	602	555	705	375	338	511	269	239				384	221	195			
-1.5 m	614	614	567	540	383	346							386	293	262			



E36ZS SPECIFICATIONS

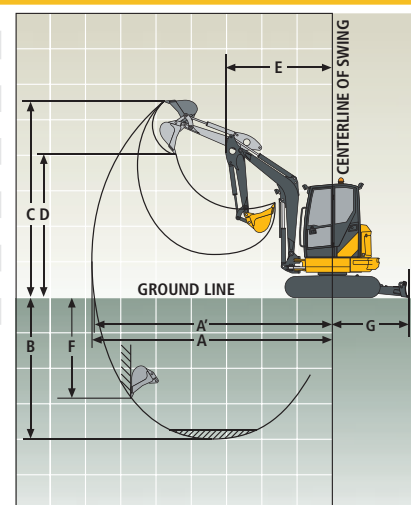
Engine		E36ZS		
Manufacturer and Model		Yanmar 3TNV88-BPWN		
Non-Road Emission Standard		EU Stage IIIA		
Gross Rated Power (ISO 14396)		22.2 kW at 2,400 rpm		
Maximum Gross Torque (SAE J1995 and ISO 3046)		106.6 Nm at 1,440 ±1 00 rpm		
Cylinders		3		
Piston Displacement		1.642 L		
Off-Level Ability		30-deg. continuous, 35-deg. intermittent		
Cooling				
Puller-type cooling fan				
Hydraulics				
Designed for high digging capacity, productivity, and operating precision, and excellent fuel economy				
Main Pump		Variable-displacement pump + gear pump		
Maximum Discharge Flow		2 x 45.5 L/min + 23.75 L/min + 11.25L/min (2 x 17 cc/rev + 9.5 cc/rev + 4.5 cc/rev @ 100% efficiency)		
Pilot Unit				
Type		Onboard pilot unit on the pump with safety valve and 2-speed control valve		
System Operating Pressure				
Circuits				
Implement		24.0 + 24.0 + 20.6 MPa		
Travel		24.0 MPa		
Swing		19.6 MPa		
Pilot		3.5 MPa		
Auxiliary		Preset to 24.0 MPa 1-way mode		
Controls		Hydraulic pilot controls with hydraulic-enable lever		
Travel System				
Drive Method		Open-loop hydrostatic type		
Travel Motor		Axial-piston motor		
Maximum Drawbar Pull		27.16 kN		
Travel Speeds				
Low		2.7 km/h		
High		4.8 km/h		
Parking Brake		Wet, multi disc		
Cylinders				
		Bore Diameter	Rod Diameter	Stroke
Boom		85 mm	45 mm	556 mm
Arm		75 mm	45 mm	658 mm
Bucket		70 mm	40 mm	490 mm
Swing System				
Swing Motor		Axial-piston motor		
Swing Reduction System		Planetary gear reduction		
Swing Gear Lubrication		Grease bath		
Swing Brake		Wet, multi-disc		
Swing Speed		9.5 rpm		
Swing Torque		5170 Nm		
Undercarriage LC				
X-leg type center frame with forged swing bearing support is integrally welded with reinforced box-section track frames; includes lubricated rollers, idlers, track adjusters (with shock-absorbing spring), and greased and sealed track chain with double-grouser shoes				
Track Frame		Pentagonal box type		
Number of Shoes (each side)		43		
Rollers (each side)				
Carrier		1		
Track		4		
Track Guides (each side)		2		
Standard Shoe Size		300-mm double grouser		
Weight and Ground Pressure				
Standard configuration with 500-mm bucket				
Double-Grouser Shoe Width		300 mm		
Operating Weight		3718 kg		
Ground Pressure				
Steel Tracks		40.2 kPa		
Rubber Tracks		42.2 kPa		
Standard Counterweight		470 kg		

While general information, pictures, and descriptions are provided, some illustrations and text may include product options and accessories NOT AVAILABLE in all regions, and in some countries products and accessories may require modifications or additions to ensure compliance with the local regulations of those countries.

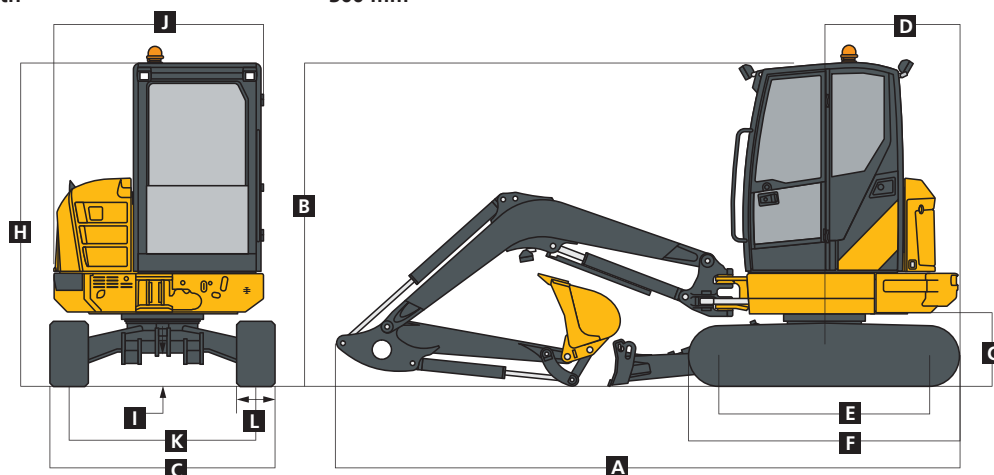
E36ZS SPECIFICATIONS

Electrical System	E36ZS
Batteries	12V (1 X 12 volt, 71 Ah, 640 CCA [EN])
Alternator Rating	55 amp
Serviceability	
Refill Capacities (standard fill)	
Fuel Tank	44 L
Engine Coolant	5 L
Engine Oil	6.7 L
Travel Final Device (each side)	0.33 L
Hydraulic System	65.5 L
Hydraulic Tank	61.5 L

Operating Dimensions	
Standard Boom	Standard Dipperstick
	Tooth
Tool Force	
Bucket	35.0 kN
Arm	21.1 kN
A Maximum Reach	5506 mm
A' Maximum Reach at Ground Level	5391 mm
B Maximum Digging Depth	3247 mm
C Maximum Cutting Height	4925 mm
D Maximum Loading Height	3336 mm
E Minimum Slew Radius	1863 mm
F Maximum Vertical Wall Digging Depth	2123 mm
G Tail-Swing Radius (with added counterweight)	933 mm



Overall Dimensions	
Standard Boom	Standard Dipperstick
A Overall Length	5503 mm
B Overall Height	2491 mm
C Overall Width (over tracks)	1750 mm
D Tail-Swing Radius	933 mm
E Tumbler Distance	1604 mm
F Overall Length of Crawler	2062 mm
G Counterweight Clearance	568 mm
H Overall Height (to top of cab)	2491 mm
I Ground Clearance	251 mm
J Overall Width of Upperstructure	1630 mm
K Track Gauge	1450 mm
L Shoe Width	300 mm



While general information, pictures, and descriptions are provided, some illustrations and text may include product options and accessories NOT AVAILABLE in all regions, and in some countries products and accessories may require modifications or additions to ensure compliance with the local regulations of those countries.

E36ZS SPECIFICATIONS

E36ZS Lift Capacities

Boldface type indicates stability-limited capacity; lightface type indicates hydraulically limited capacities, in kg. Lift capacities are based on ISO 10567, 75 percent of minimum tipping load or 87 percent of hydraulic lift capacity, whichever is the lower. Lift capacities highlighted are based on hydraulic capacity and assume the machine is situated on firm, level ground.

LOAD POINT HEIGHT	HORIZONTAL DISTANCE FROM CENTERLINE OF ROTATION							
	2.0 m		3.0 m		4.0 m		Maximun Reach	
	Over Front	Over Side	Over Front	Over Side	Over Front	Over Side	Over Front	Over Side
4.0 m			679	679			725	725
3.0 m			621	621	708	531	707	494
2.0 m	1171	1171	847	816	752	520	747	419
1.0 m			1200	752	874	496	780	389
Ground Line	2555	1329	1411	712	966	477	820	397
-1.0 m	2289	1340	1384	705	925	474	862	453
-2.0 m	1661	1379	1032	727			870	646

Contact your John Deere dealer for optimum bucket and attachment selections. These recommendations are for general conditions and average use. Does not include optional equipment such as thumbs or couplers. Larger buckets may be possible when using light materials, for flat and level operations, less compacted materials, and volume-loading applications such as mass-excavation applications in ideal conditions.

ATTACHMENTS

Looking for attachments? Emmetts have you covered.

We'll help you find the best option for any excavator, skid steer, wheel loader or tractor. Don't have a John Deere yet, mate? No worries. Our attachments fit all brands, We've chosen to partner with suppliers that are proven to have:

- High build quality
- Large ranges
- Quick turn-around (in stock or not far behind)
- Value for money pricing



HIMAC Brush-cutter



HIMAC Rock Picker



Auger-torque Trencher



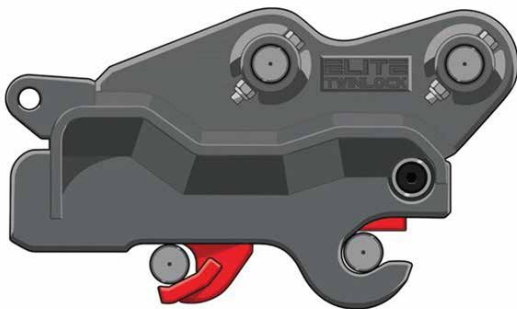
FAE Mulcher



Sureweld 2600 Trailer



Elite Twinlock Hitch



OZ Buckets



While general information, pictures, and descriptions are provided, some illustrations and text may include product options and accessories NOT AVAILABLE in all regions, and in some countries products and accessories may require modifications or additions to ensure compliance with the local regulations of those countries.